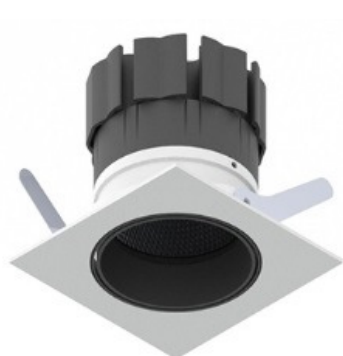
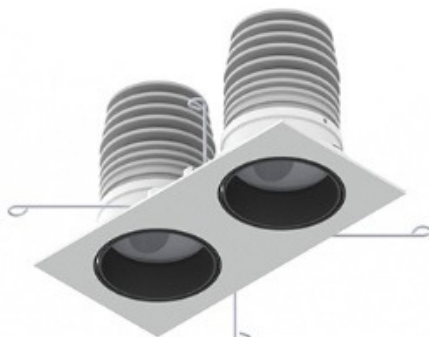


# ADL(SQ) RANGE

## ADJUSTABLE SQUARE RECESSED PART L LED WITH SET BACK GLASS



ADL(SQ)Ra98



ADL(SQ-2)112

The ADL(SQ) range has the standard ADL LED body with a round edged metal front plate. The LED body has a 28° tilt & a 360° rotation and the optics are set back from the front bezel by 20mm which provides a unique appearance. This recess is finished in black as standard (white is available if preferred – ordering code /WR). Available in single or twin units.

Constant development of this range has now produced exceptional versions with the release of the ADL(SQ)Ra98 ADL(SQ)WM ranges. The ADL(SQ)Ra98 comes as standard with a CRI of 98 with the R9 (red) spectrum value of 98, giving unbeatable colour rendering of near daylight quality. A further option is the ADL(SQ)WM WarmdiM version with a CRI of 94 which at 100% output has a colour temperature of 2650K, but reduces to 1800K as you dim towards 0% output. This gives the warming fade of a halogen lamp with the efficiency benefits of an LED fitting on top of excellent colour consistency.

The fitting is sealed to IP54 as standard with the option to upgrade to IP65. It can also have a 1 hour fire rating when installed with a fire plate or approved hood in accordance with recommendations as stated in our current installation instructions.

LED's are run via one driver which can be up to 20m from the luminaire making installation simple. Control options available: DALI, 1-10v, mains dimming and non-dimming with maintained or non-maintained emergency packs.

LUMINAIRE CAT NO	BEAM ANGLE	COLOUR TEMP(K)	POWER TcW	LUMEN OUTPUT*	EM OPT	DIM OPT
ADL(SQ)112	22°/38°	2700/3000	10.4	785	•	•
ADL(SQ)Ra98	28°/45°	2700/3000/4000	11.6	984	•	•
ADL(SQ)Ra98/SP	10°	2700/3000/4000	11.6	455	•	•
<b>ADL(SQ)WM</b>	<b>27°/45°</b>	<b>1800-2650</b>	<b>12.2</b>	<b>748</b>	•	•
ADL(SQ-2)112	22°/38°	2700/3000	20.8	2X 785	•	•
ADL(SQ-2)Ra98	28°/45°	2700/3000/4000	23.2	2X 984	•	•
ADL(SQ-2)Ra98/SP	10°	2700/3000/4000	23.2	2X 455	•	•
ADL(SQ-2)WM	27°/45°	1800-2650	24.4	2X 748	•	•

\* Lumen output of the luminaire based on 3,000k LED diodes at 38°-45° beam angle

### ADDITIONAL ORDERING INFORMATION

- Mains dimming - add /MDIM
- 1-10v dimming - add /110-D
- DALI dimming - add /DALI
- DMX compatible - add /DMX
- Emergency version - add /EM
- Fire Rating - add /F
- 20-29° beam angle - add /NW
- 30-39° beam angle - add /MD
- 40-45° beam angle - add /WD
- IP65 rating - add /IP65
- White baffle - add /WR
- Low profile heatsink - add /LP

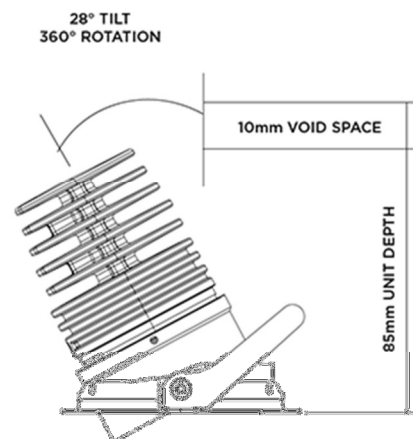
LED Colours:  
 Very warm white (2700k) - add /CLVWW  
 Warm white (3,000k) - add /CLWW  
 Cool white (4,000k) - add /CLCW

Bezel Finishes:  
 Textured white (RAL9010 70% Matt) - standard  
 Black (RAL9005) - add /B  
 Other RAL Colours - on request  
 Metallic finishes - on request

### FEATURES

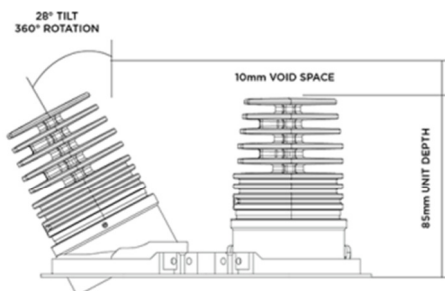
- Up to 28° tilt and 360° rotation
- Up to 84 Llm/tcW
- Up to L90 B5 at 50,000 hours
- Exceptional colour consistency, 2 Macadam Ellipse
- Up to CRI-98, R9-98 for exceptional colour rendering
- DALI, 1-10V, Main dimming (leading & trailing edge) & DMX compatible
- 1 Hour fire rated option
- Emergency versions
- IP54 as standard, IP65 version also available
- Low profile alternative (ADL(SQ)112 & ADL(SQ-2)112 only)
- Single or twin version
- RAL or metallic bezel finishes available on request

### DIMENSIONS



ø72mm CUT OUT  
 ø51mm LENS APERTURE  
 ø40mm BEZEL

ADL(SQ)112



2 X ø72mm CUT OUT 80mm CENTRES ( 2X ø74mm CUT OUT FOR IP RATED VERSION)  
 ø51mm LENS APERTURE  
 ø80 x 160mm BEZEL

ADL(SQ-2)112